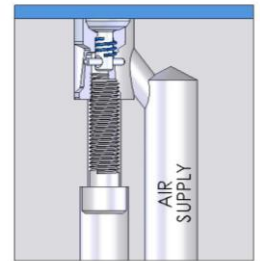


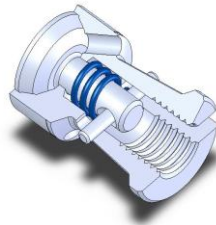
A full line of air poppets and accessories is offered by David Wolfe Design, Inc. Utilizing air-assistance to eject plastic parts out of the mold, they offer higher airflow because of multiple air access holes. The air poppets are made from hardened 17-4 PH stainless steel to resist rust and corrosion, and range in size from .250"D to 1.417"D and Metric sizes ranging from 8.0mm to 18.0mm.

Application information, pricing, dimensions, literature and CAD file downloads are all available at our online store at [www.airpoppet.com](http://www.airpoppet.com)



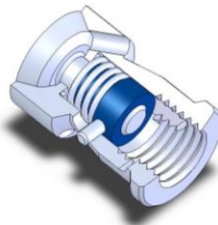
#### Original Series

- Corrosion resistant stainless steel
- Bolt-in or Press-fit styles available
- Superior air flow
- Stainless steel screws available
- Complete family of components
- Affordability



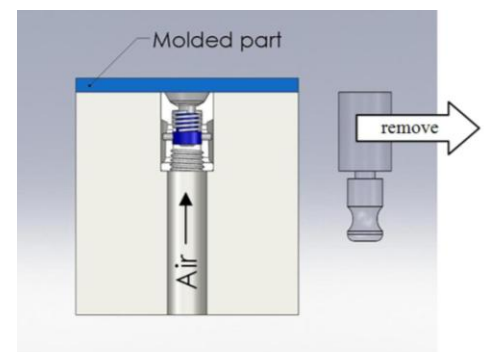
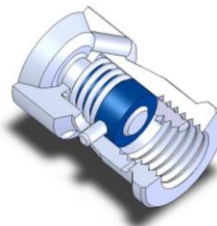
#### "SL" Series

- Guide sleeve for axial alignment
- Sleeve reduces wear on cross pin
- Positive stop to reduce spring fatigue
- High pressure spring for tighter seal
- Spring rated for high temperatures
- Life tested at 1,000,000 cycles
- Vacuum applications



#### Metric Series

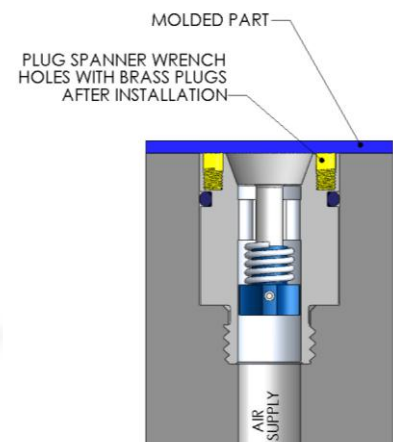
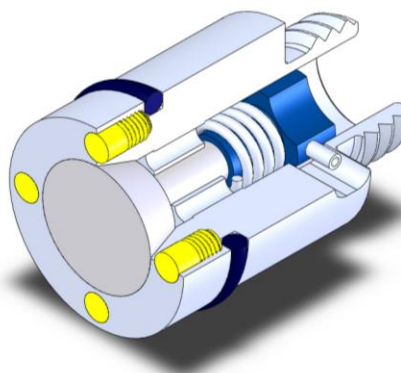
- Same great features as "SL" Series
- More durable than most other brands
- Sized for both new and replacement
- Works for replacement of "stemmed" style poppets
- Bolt-in availability unlike other metric poppets



Replacement installation

#### Summo Series

- Ideal for abusive environments such as heated compression molds where resin contamination makes for difficult removal.
- Hardened Viscount 44 steel
- Spanner wrench, attachment bolts, and additional brass plugs (sold separately)
- High volume air flow
- Heavy duty spring pressure to maintain a tight poppet seal
- O-ring to seal against resin contamination around poppet (supplied)
- Two styles available
- Re-build kits available



**Accessories**

- Drill Jigs for drilling angled air lines
- Collars for face mounting
- Spanner wrenches for installation and removal
- Rotational mold inserts
- Rebuild kits
- Stainless steel screws
- Brass inserts

*Message to designers...here are some additional graphics from our website if you want to use them.  
Certainly not required.*

